



www.yoke.net

-- An ISO 9001 Certified Company --

## YOKE INDUSTRIAL CORP.

#39, 33<sup>RD</sup> Road, Taichung Industrial Park

Taichung 407. Taiwan

Tel : 886-4-2350-8088

Fax : 886-4-2350-1001

E-Mail : yoke777@ms74.hinet.net

### User Instruction and Warning Information for **N-2853G-TRCP**

**Warning : Working at height is a very dangerous activity which may lead to severe injury or fatality. We advise that you personally assume the responsibility to learn the use and the safety measures that apply to this equipment. Remember that there is no better "instruction" than that of a trained instructor. Train in the use of this tool, verify that you have fully understood how it works and if in any doubt, please ask competent person!**

**Don't make any alterations or additions to the equipment without the manufacturer's prior written consent.**

**Any repair shall only be made by the manufacturer.**

**The products shall not be used outside its limitations, or for any purpose other than that for which it is intended.**

**It is essential for the safety of the user that if the product is re-sold outside Taiwan, the reseller shall provide instructions for use, for maintenance, for periodic examination and for repair in the language of the country in which the product is to be used.**

**If there is reason to doubt your fitness to safely absorb the shock from a fall arrest, please consult your doctor. Age and fitness seriously affect a worker's ability to withstand falls. Pregnant women or minors must not use YOKE hooks or carabiners.**



## 1. GENERAL USE INFORMATION

The connector is essential for your safety so we recommend that you :

\*assign it to an individual user whenever possible:

\*check it before each use, in particular for:

- Deformations
- Signs of wear
- Correct locking system operation.

If you are in any doubt whatsoever about the safe condition of this product or if the connector has been used to arrest a fall, it is essential for safety that it is withdrawn from use.

Ensure that the instructions for other components used in conjunction with these products are complied with as stated by the **Regulation (EU) 2016/425**.



www.yoke.net

-- An ISO 9001 Certified Company --

## YOKE INDUSTRIAL CORP.

#39, 33<sup>RD</sup> Road, Taichung Industrial Park

Taichung 407. Taiwan

Tel : 886-4-2350-8088

Fax : 886-4-2350-1001

E-Mail : yoke777@ms74.hinet.net

The anchor device or anchor point should always be positioned, considering both the height of fall and the extension of the rope in order to avoid possible obstructions (i.e.the ground). Be sure that the anchorage strength corresponds to min. Breaking loaded to **30 kN**.

**YOKE products are made in accordance with European Standard No.EN362:2004.**

## 2. RESCUE PLAN

It is important to make plan for a rescue in the event of a fall BEFORE starting to work. Ensure that a rescuer plan is discussed with a competent person and that this plan takes into account:

- Dangers from swing falls
- Avoidance of exposure of connecting components to sharp edges
- Removal from service for any components subject to a fall.

It is also important to ensure that the employer has a documented rescue plan and has the ability to implement it.

## 3. COMPATIBILITY

When used as part of a PPE system against falls from a height, this connector must be connected to a compatible connection (example: a correct D-Ring). It is important to ensure compatibility in order to avoid possibility of roll-out or disengagement.

Only one personal protective system can be attached to this connector. This connector is designed for use by one person only.

Ensure that proper fall clearance exists in order to prevent striking ground or other objects in the event of a fall.

**Note:** a connector is considered to have a compatible connection when the connectors have been designed to work together and that their shape/size do not cause gates to inadvertently open. All connections must fully close and lock.

## 4. MEANING OF MARKING AND / OR SYMBOLS:

Manufacturer name or abbreviation name: **YOKE or Y**

YOKE Item number: e.g. **N-2853G**

Force information: e.g. **40kN**

Year code of manufacturing year : 2 digits, e.g. **16**

Batch number: 3 Capital letters, e.g. **NBB**



***User must read,  
understand and observe  
these instructions for use.***



www.yoke.net

-- An ISO 9001 Certified Company --

## YOKE INDUSTRIAL CORP.

#39, 33<sup>RD</sup> Road, Taichung Industrial Park

Taichung 407. Taiwan

Tel : 886-4-2350-8088

Fax : 886-4-2350-1001

E-Mail : yoke777@ms74.hinet.net

Standard: **EN362:2004 B**

Major axis strength :  $\longleftrightarrow$  40 kN

**Make sure markings on products are legible. The marking of item number and batch number can be cross-referenced to the Test Certificate issued by YOKE.**

### 5. MAINTENANCE, SERVICING AND STORAGE.

**Cleaning** : If soiled, rinse in clean water ( maximum temperature 40°C ) with mild neutral detergent. When the equipment becomes wet, either from being in use or when due to cleaning, it shall be allowed to dry naturally, and shall be kept away from direct heat.

**Lubrication** : Lubricate mobile parts (e.g. spring and rivet ) with a silicone based lubricant only. This should be carried out after cleaning and drying. Avoid any oil contact with textile parts.

**Storage** : During transportation or after any necessary cleaning, drying and lubrication, store unpacked in a cool, dry, dark place in a chemically neutral environment away from excessive heat or heat sources, high humidity, sharp edges, corrosives or other possible causes of damage. Do not store wet. Avoid U.V. radiation, and salt environments.

**Service Life:** It is very difficult to estimate obsolescence due to local use and storage conditions, however, the following may reduce the strength greatly and the lifespan to as little as one use: incorrect use, severe fall arrest, mechanical deformation, fall from a height on the connector, general wear and tear, gate malfunction, chemical contamination, heat contamination.

### 6. RECORDS (RECORD-CARD)

The product could be traced through Test Certificate issued by YOKE. The Test Certificate shows Model / type identification (i.e. Item Number), the name and contact details of the manufacturer, and means of identification (batch or serial number).

### 7. YOKE'S CONNECTORS USE AND MAINTENANCE

The connector you have just acquired is used to connect personal protective equipment to some other system component (harness, lanyard, fall arrester, anchorage point, etc.)



www.yoke.net

-- An ISO 9001 Certified Company --

## YOKE INDUSTRIAL CORP.

#39, 33<sup>RD</sup> Road, Taichung Industrial Park

Taichung 407. Taiwan

Tel : 886-4-2350-8088

Fax : 886-4-2350-1001

E-Mail : yoke777@ms74.hinet.net

- 
- a) The connector is designed to be used as a Termination Connector (**class B**). It is important that connector be secured to an anchorage point in such a manner that any force exerted will be along the major axis of the connector. Avoid situations where forces could be applied against the minor axis (See the last page of User Instruction and Warning Information section).
  - b) When used as a **Class B** connector, the connector can be part of a subsystem and fixed so that forces would be exerted only along the major axis.

When employing a connector that has a manual closing gate (example – screw gate), it is recommended that it be used in situations that DO NOT require frequent attachment and removal during a working period. Care should be taken to avoid loading a connector across its gate (see the last page of User Instruction and Warning Information section).

When assessing the appropriateness of a fall arrest system, the length of this connector should be taken into consideration concerning all distance.

Before first use it is recommended to check carefully that the equipment is compatible with the other system components.

**IT IS ESSENTIAL TO ENSURE BEFORE USE THAT THE  
RECOMMENDATIONS SPECIFIC TO EACH PART ASSOCIATED WITH THIS  
PRODUCT ARE COMPLIED WITH, AS SPECIFIED IN THE MANUAL.**

EU declaration of conformity download :  
<http://cloud.yoke.net/index.php/s/ZnGUtSmaLhm2mTg>

### **IMPORTANT :**

These instructions should be supplied to each person using this product. This connector must be inspected according to yoke catalog ([www.yoke.net](http://www.yoke.net)) prior to each use by the user and at least once a year by the manufacturer or by an authorized person. The inspection should be recorded on the enclosed schedule.



www.yoke.net

-- An ISO 9001 Certified Company --

### YOKE INDUSTRIAL CORP.

#39, 33<sup>RD</sup> Road, Taichung Industrial Park

Taichung 407. Taiwan

Tel : 886-4-2350-8088

Fax : 886-4-2350-1001

E-Mail : yoke777@ms74.hinet.net

## Inspection Records and Schedule

Product Designation: A B T

Model / Type identification:

Batch number and year of manufacture:

Date of purchase:

Date first bought into use:

Inspection Record Date	Results	Name of Inspector	Signature	Next Inspect Due Date

Involved notified Body:

**design and controlling stage:**

SATRA Technology Europe Ltd (2777)

Bracetown Business Park,

Clonee, Co. Meath

D15 YN2P

Ireland



www.yoke.net

-- An ISO 9001 Certified Company --

## YOKE INDUSTRIAL CORP.

#39, 33<sup>RD</sup> Road, Taichung Industrial Park

Taichung 407. Taiwan

Tel : 886-4-2350-8088

Fax : 886-4-2350-1001

E-Mail : yoke777@ms74.hinet.net

This instruction applies to the following models:

Description	Sample	Opening width	Material Item made from	Class Per EN362:2004
<b>Aluminum Caraabiner</b>	<b>N-2853G-TRCP</b>	<b>22mm</b>	<b>Aluminum</b>	<b>B</b>

Additional model numbers may appear on the next printing of these instructions.



www.yoke.net

-- An ISO 9001 Certified Company --

## YOKE INDUSTRIAL CORP.

#39, 33<sup>RD</sup> Road, Taichung Industrial Park

Taichung 407. Taiwan

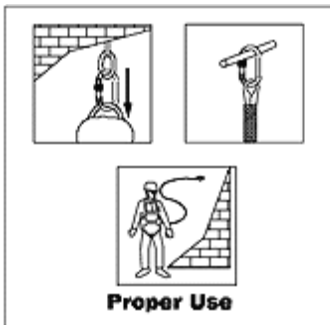
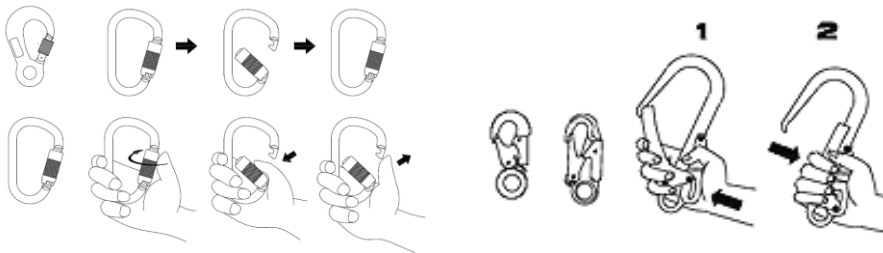
Tel : 886-4-2350-8088

Fax : 886-4-2350-1001

E-Mail : yoke777@ms74.hinet.net

# Chart for User Instruction and Warning Information

## Application for Harness Safe Hook.



Warning: Any dangers may arise by improper use which the safe function of any one item is affected by or interferes with the safe function of another. Only connect with these proper points and a full body harness that can be used in a fall arrest system.

<b>proper Use</b>			
<b>Improper Use</b>			

### IMPORTANT :

- 1) Ensure that the anchorage point is above the user.
- 2) Avoid situation where force may be applied to the gate of a connecting device.
- 3) Ensure gate of connecting device closes properly
- 4) Avoid connections that would place force against the gate or locking lever of a connecting device.